

Number: PL-231  
Date: May 31, 2000  
From: North American Numbering Plan Administration (NANPA)  
Subject: 801 NPA Split, Creating 385 NPA (Utah)

---

On April 26, 2000 the Utah Public Service Commission (UPSC) approved a relief plan calling for a geographic split of the 801 NPA, which currently serves the greater Salt Lake City area. NPA code 385 has been assigned for this purpose.

The new 385 NPA will consist of the southern and northern geographic portions of the existing 801 NPA, including such communities as American Fork, Orem, Provo and Spanish Fork in the south, and Ogden, Morgan, Kaysville and Bountiful in the north. The central portion of the existing 801 NPA, Salt Lake County, will retain the 801 NPA.

The split of the 801 NPA, and the beginning of a permissive dialing period, will take place at 2:00 AM Mountain Time on December 31, 2000. The permissive dialing period will end at 2:00 AM Mountain Time on June 30, 2001. During the permissive dialing period, either the 801 or the 385 NPA code will be acceptable in a dialed number terminating in the new 385 NPA. After the permissive period, all calls dialed with incorrect NPA codes, as defined in the NPA split information published in the Local Exchange Routing Guide (LERG), will be routed to intercept. This intercept recording announcement will be available at least until 2:00 AM Mountain Time August 25, 2001.

The attached map illustrates the 801 and 385 NPA configuration after the split is completed. Also attached are listings of the assigned central office codes (NXXs) and Rate Areas that will be associated with the 801 and 385 NPAs. These lists reflect assignments published in the LERG as of May 1, 2000. Since the attached NXX information may change over time, updated information may be found either in the LERG or the NPA NXX Activity Guide (NNAG). Current information in the NNAG is free of charge and from the LERG is available by license contract from Telcordia's Traffic Routing Administration (TRA) group, which can be contacted by dialing the TRA hotline at 732-699-6700.

International and domestic carriers should ensure that the new 385 NPA code has been activated throughout their networks prior to December 31, 2000. Test calls to verify routing to the new NPA code can be made by dialing any of three test numbers at these locations:

- Orem OREMUTMADS0 385-227-0384
- Farmington FRTNUTMADS0 385-447-0385
- Kaysville KYVLUTMADS0 385-497-0386

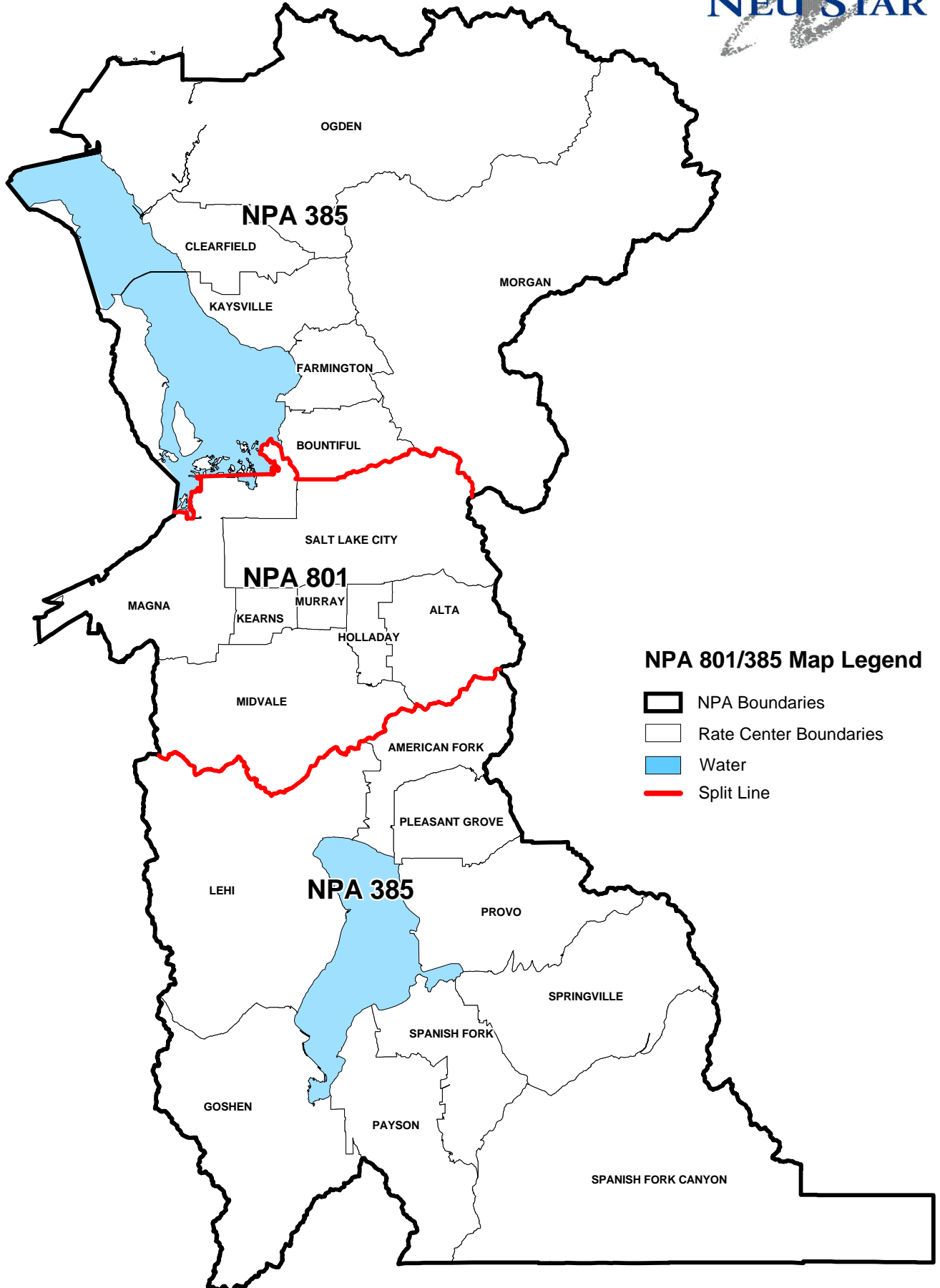
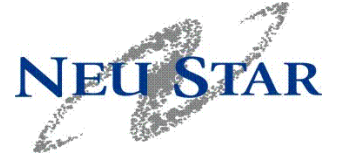
U S WEST indicates that these numbers will be dialable as of December 31, 2000. Calls successfully completed to a test number will receive a recorded announcement. The test numbers will be disconnected no earlier than August 26, 2001.

The dialing plan for the 385 NPA will be the same as the current dialing plan for the 801 NPA, namely:

- All home NPA local calls may be dialed on a 7-digit basis with no prefix (NXX-XXXX).
- All foreign NPA local calls must be dialed with 10 digits (NPA+NXX+XXXX).
- All direct dialed toll calls, i.e., calls that generally incur an extra charge, must be dialed with a prefix "1" and 10 digits (1+NPA + NXX + XXXX).
- All operator assisted calls, including credit card, collect, and third party calls, will be dialed with a "0" prefix and 10 digits (0+NPA+NXX+XXXX).

General questions concerning the geographic split may be directed to Joe Cocke, NeuStar, Inc.– NPA Relief Planning – Western Region at 805-520-1945. Questions of a technical nature should be directed to the NPA project coordinator of each respective service provider:

# NPA 801 & 385 Rate Center Map



## NPA 801/385 Map Legend

- NPA Boundaries
- Rate Center Boundaries
- Water
- Split Line

**NXXs Remaining in the 801 NPA**

NPA	NXX	RC ABBRE	SWITCH
801	201	SALT LAKE	SLKCUTAON02
801	202	SALT LAKE	SLKCUTEWCM1
801	204	SALT LAKE	SLKCUTMADS3
801	205	SALT LAKE	SLKCUTRP1MD
801	206	ALTA	WVCYUTBXDS0
801	207	MURRAY	SLKDUTHTDS0
801	208	MIDVALE	SLKDUTHTDS0
801	209	SALT LAKE	SLKCUTAON02
801	212	SALT LAKE	SLKCUTMADS3
801	213	SALT LAKE	SLKCUTMADS3
801	214	SALT LAKE	SLKCUTMADS3
801	215	SALT LAKE	SLKCUTMADS3
801	219	SALT LAKE	WVCYUTECHAA
801	220	SALT LAKE	SLKCUTMADS0
801	230	SALT LAKE	SLKCUTAON02
801	231	SALT LAKE	SLKCUTAON02
801	232	SALT LAKE	SLKCUTAON02
801	233	MIDVALE	MDVAUTMADS0
801	233	MIDVALE	MDVAUTMARS0
801	233	MIDVALE	MDVAUTMADS0
801	233	MIDVALE	MDVAUTMARS0
801	233	MIDVALE	MDVAUTMADS0
801	236	SALT LAKE	SLKCUTMADS0
801	237	SALT LAKE	SLKCUTMADS0
801	238	SALT LAKE	SLKCUTMADS0
801	239	SALT LAKE	SLKCUTMADS0
801	240	SALT LAKE	SLKCUTMADS0
801	241	SALT LAKE	SLKCUTEWCM1
801	242	SALT LAKE	SLKCUTEWCM1
801	243	SALT LAKE	SLKCUTAON02
801	244	SALT LAKE	SLKCUTAON02
801	246	SALT LAKE	SLKCUTMADS0
801	247	SALT LAKE	SLKCUTWEDS0
801	248	SALT LAKE	SLKCUTEWCM1
801	249	SALT LAKE	SLKDUTEWCM1
801	250	MAGNA	MAGNUTNMRS0
801	251	MAGNA	MAGNUTNMRS0
801	252	MAGNA	MAGNUTNMRS0
801	253	MIDVALE	RVTNUTMADS0
801	254	MIDVALE	RVTNUTMADS0
801	255	MIDVALE	MDVAUTMADS0
801	256	MIDVALE	MDVAUTMADS0
801	257	SALT LAKE	SLKCUTMADS0
801	258	SALT LAKE	SLKCUTMADS0
801	259	SALT LAKE	SLKCUTRP1MD
801	260	MIDVALE	WJRDUTMADS0
801	261	MURRAY	MRRYUTMADS0
801	262	MURRAY	MRRYUTMADS0
801	263	MURRAY	MRRYUTMADS0
801	264	MURRAY	MRRYUTMADS0
801	265	MURRAY	MRRYUTMADS0
801	266	MURRAY	MRRYUTMADS0
801	267	MURRAY	MRRYUTMADS0
801	268	MURRAY	MRRYUTMADS0
801	269	MURRAY	MRRYUTMADS0
801	270	MURRAY	MRRYUTMADS0
801	271	SALT LAKE	WVCYUTECHAA
801	272	HOLLADAY	HLDYUTMADS0

801	273	HOLLADAY	HLDYUTMADS0
801	274	HOLLADAY	HLDYUTMADS0
801	275	SALT LAKE	WVCYUTECHAA
801	276	SALT LAKE	WVCYUTECHAA
801	277	HOLLADAY	HLDYUTMADS0
801	278	HOLLADAY	HLDYUTMADS0
801	280	MIDVALE	WJRDUTMADS0
801	281	MURRAY	MRRYUTMADS0
801	282	MIDVALE	WJRDUTMADS0
801	283	SALT LAKE	SLKDUTFJCM5
801	284	MURRAY	MRRYUTMADS0
801	285	HOLLADAY	SLKCUT26DS0
801	286	MURRAY	SLKCUT26DS0
801	287	MURRAY	MRRYUTMADS0
801	288	MURRAY	MRRYUTMADS0
801	289	SALT LAKE	SLKCUT26DS0
801	290	MURRAY	SLKCUT24DS1
801	291	MURRAY	MRRYUTADCM1
801	293	MURRAY	MRRYUTMADS0
801	297	SALT LAKE	SLKCUTMADS0
801	301	MURRAY	MRRYUTFL1MD
801	303	SALT LAKE	SLKDUTHTDS0
801	304	MIDVALE	MDVAUTMADS0
801	305	MURRAY	SLKDUTHTDS0
801	307	SALT LAKE	SLKDUTFJCM5
801	312	MURRAY	MRRYUTMADS0
801	313	MURRAY	MRRYUTMADS0
801	314	MURRAY	MRRYUTMADS0
801	316	MIDVALE	SLKCUT24DS1
801	320	SALT LAKE	SLKCUTMADS1
801	321	SALT LAKE	SLKCUTMADS1
801	322	SALT LAKE	SLKCUTMADS1
801	323	SALT LAKE	SLKCUTMADS1
801	324	SALT LAKE	SLKDUTHTDS0
801	325	SALT LAKE	SLKCUTMADS1
801	326	SALT LAKE	SLKCUTXDDS0
801	327	MURRAY	SLKCUTXDDS0
801	328	SALT LAKE	SLKCUTMADS1
801	329	MURRAY	MRRYUTADCM1
801	333	SALT LAKE	SLKCUTMADS0
801	338	MURRAY	MRRYUTADCM1
801	339	MURRAY	MRRYUTADCM1
801	341	SALT LAKE	SLKCUT18CM1
801	348	SALT LAKE	SLKCUT18CM1
801	349	SALT LAKE	SLKCUT18CM1
801	350	SALT LAKE	SLKCUTMADS1
801	352	MIDVALE	MDVAUTMADS0
801	353	SALT LAKE	SLKCUTMADS0
801	355	SALT LAKE	SLKCUTMADS1
801	359	SALT LAKE	SLKCUTMADS1
801	363	SALT LAKE	SLKCUTMADS1
801	364	SALT LAKE	SLKCUTMADS1
801	365	HOLLADAY	SLKCUTXDDS0
801	366	SALT LAKE	SLKCUTMADS1
801	381	SALT LAKE	MRRYUTFL1MD
801	382	MAGNA	SLKCUTXDDS0
801	401	SALT LAKE	WVCYUTBXDS0
801	403	SALT LAKE	SLKDUTGNMCM1
801	408	SALT LAKE	SLKCUTMADS1

**NXXs Remaining in the 801 NPA**

801	410	SALT LAKE	SLKDUTHTDS0
801	412	SALT LAKE	SLKCUTSODS0
801	413	SALT LAKE	SLKDUTHTDS0
801	414	SALT LAKE	SLKDUTGNM1
801	415	SALT LAKE	SLKDUTHTDS0
801	417	KEARNS	SLKDUTHTDS0
801	422	SALT LAKE	SLKCUTMADS0
801	424	HOLLADAY	HLDYUTMADS0
801	428	SALT LAKE	SLKCUTXDDS0
801	430	MURRAY	MRRYUTFL1MD
801	433	SALT LAKE	SLKCUT30DS0
801	439	KEARNS	SLKDUTITDS0
801	440	SALT LAKE	SLKCUTWPCM1
801	441	MIDVALE	MDVAUTBYCM1
801	442	SALT LAKE	SLKCUTMADS0
801	446	MIDVALE	RVTNUTMADS0
801	449	MIDVALE	MDVAUTBYCM1
801	450	SALT LAKE	SLKCUTWPCM1
801	453	HOLLADAY	CTWDUTMADS0
801	454	KEARNS	SLKDUTHTDS0
801	455	SALT LAKE	SLKCUTWPCM1
801	460	SALT LAKE	SLKCUT18CM1
801	461	SALT LAKE	SLKCUTSODS0
801	463	SALT LAKE	SLKCUTSODS0
801	464	SALT LAKE	SLKCUTSODS0
801	466	SALT LAKE	SLKCUTSODS0
801	467	SALT LAKE	SLKCUTSODS0
801	468	SALT LAKE	SLKCUTSODS0
801	474	SALT LAKE	SLKCUTSODS0
801	480	SALT LAKE	SLKCUTSODS0
801	481	SALT LAKE	SLKCUTSODS0
801	482	SALT LAKE	SLKCUTSODS0
801	483	SALT LAKE	SLKCUTSODS0
801	484	SALT LAKE	SLKCUTSODS0
801	485	SALT LAKE	SLKCUTSODS0
801	486	SALT LAKE	SLKCUTSODS0
801	487	SALT LAKE	SLKCUTSODS0
801	488	SALT LAKE	SLKCUTSODS0
801	490	SALT LAKE	SLKCUTSODS0
801	493	SALT LAKE	SLKCUTSODS0
801	495	MIDVALE	DRPRUTMADS0
801	501	MIDVALE	DRPRUTMADS0
801	502	SALT LAKE	SLKDUTGNM1
801	508	MAGNA	MAGNUTNMRS0
801	509	MURRAY	MRRYUTFL1MD
801	514	MURRAY	MRRYUTFL1MD
801	517	SALT LAKE	SLKCUTMADS1
801	518	SALT LAKE	SLKCUTWPCM1
801	519	SALT LAKE	SLKCUTMADS1
801	520	SALT LAKE	SLKCUTWPCM1
801	521	SALT LAKE	SLKCUTMADS1
801	522	SALT LAKE	SLKCUTMADS1
801	523	MIDVALE	DRPRUTMADS0
801	524	SALT LAKE	SLKCUTMADS1
801	526	SALT LAKE	SLKCUTMADS1
801	527	HOLLADAY	SLKDUTHTDS0
801	530	SALT LAKE	SLKCUTMADS1
801	531	SALT LAKE	SLKCUTMADS1
801	532	SALT LAKE	SLKCUTMADS1

801	533	SALT LAKE	SLKCUTMADS1
801	534	SALT LAKE	SLKCUTMADS1
801	535	SALT LAKE	SLKCUTMADS1
801	536	SALT LAKE	SLKCUTMADS1
801	537	SALT LAKE	SLKCUTMADS1
801	538	SALT LAKE	SLKCUTMADS1
801	539	SALT LAKE	SLKCUTMADS1
801	541	SALT LAKE	SLKCUTAON02
801	545	MIDVALE	DRPRUTMADS0
801	550	SALT LAKE	SLKCUTAON02
801	553	MIDVALE	DRPRUTMADS0
801	554	SALT LAKE	SLKCUTAON02
801	555	SALT LAKE	MDVAUTOCDS0
801	556	SALT LAKE	SLKCUTAON02
801	557	SALT LAKE	SLKCUTAON02
801	558	SALT LAKE	SLKCUTAON02
801	559	SALT LAKE	SLKCUT01DS0
801	560	SALT LAKE	SLKCUTAON02
801	561	MIDVALE	MDVAUTMADS0
801	562	MIDVALE	MDVAUTMADS0
801	563	MIDVALE	MDVAUTMADS0
801	565	MIDVALE	MDVAUTMADS0
801	566	MIDVALE	MDVAUTMADS0
801	567	MIDVALE	MDVAUTMADS0
801	568	MIDVALE	MDVAUTMADS0
801	569	MIDVALE	MDVAUTMADS0
801	570	SALT LAKE	SLKCUTSODS0
801	571	MIDVALE	DRPRUTMADS0
801	572	MIDVALE	DRPRUTMADS0
801	573	SALT LAKE	SLKCUTWPCM1
801	574	SALT LAKE	SLKDUTGNM1
801	575	SALT LAKE	SLKCUTMADS1
801	576	MIDVALE	DRPRUTMADS0
801	577	HOLLADAY	SLKDUTITDS0
801	578	SALT LAKE	SLKCUTMADS0
801	579	SALT LAKE	SLKCUTMADS0
801	580	SALT LAKE	SLKCUTAON02
801	581	SALT LAKE	SLKCUTEADS0
801	582	SALT LAKE	SLKCUTEADS0
801	583	SALT LAKE	SLKCUTEADS0
801	584	SALT LAKE	SLKCUTEADS0
801	585	SALT LAKE	SLKCUTEADS0
801	587	SALT LAKE	SLKCUTEADS0
801	588	SALT LAKE	SLKCUTEADS0
801	590	MURRAY	SLKCUTMADS2
801	594	SALT LAKE	SLKCUTMADS1
801	595	SALT LAKE	SLKCUTMADS1
801	596	SALT LAKE	SLKCUTMADS1
801	597	SALT LAKE	SLKCUTWPCM1
801	598	SALT LAKE	SLKCUTWPCM1
801	599	SALT LAKE	SLKCUTWPCM1
801	601	MIDVALE	WVCYUTBXDS0
801	606	SALT LAKE	WVCYUTBXDS0
801	613	SALT LAKE	SLKDUTFJCM5
801	617	MAGNA	SLKDUTHTDS0
801	619	MIDVALE	DRPRUTMADS0
801	623	SALT LAKE	SLKDUTFJCM5
801	630	SALT LAKE	WVCYUTCL1KD
801	631	SALT LAKE	SLKCUTWPCM1

**NXXs Remaining in the 801 NPA**

801	633	SALT LAKE	SLKCUTWPCM1
801	634	SALT LAKE	SLKDUTGNM1
801	635	SALT LAKE	SLKDUTFJCM5
801	637	SALT LAKE	SLKDUTFJCM5
801	639	MURRAY	MRRYUTMADS0
801	641	SALT LAKE	SLKCUTWPCM1
801	646	SALT LAKE	SLKCUTMADS3
801	651	SALT LAKE	SLKCUTRP1MD
801	652	SALT LAKE	SLKCUTAON02
801	656	SALT LAKE	SLKCUT24DS1
801	657	KEARNS	SLKCUT24DS1
801	660	SALT LAKE	SLKCUT01DS0
801	661	SALT LAKE	SLKCUTRP1MD
801	671	SALT LAKE	SLKDUTFJCM1
801	673	SALT LAKE	SLKCUTAON02
801	674	SALT LAKE	SLKDUTGNM1
801	680	SALT LAKE	SLKCUTRP1MD
801	685	MURRAY	MRRYUTMADS0
801	691	SALT LAKE	SLKCUT01DS0
801	694	SALT LAKE	SLKCUTWPCM1
801	696	MURRAY	MRRYUTMADS0
801	699	SALT LAKE	SLKCUTWPCM1
801	703	SALT LAKE	SLKCUTMADS2
801	708	SALT LAKE	SLKDUTFJCM5
801	715	SALT LAKE	SLKCUTMADS0
801	718	SALT LAKE	SLKCUTWPCM1
801	733	HOLLADAY	CTWDUTMADS0
801	733	HOLLADAY	CTWDUTMARS0
801	733	HOLLADAY	CTWDUTMADS0
801	736	SALT LAKE	SLKCUT24DS1
801	741	SALT LAKE	SLKCUTMADS0
801	742	ALTA	ALTAUTMARS1
801	743	MURRAY	MRRYUTMADS0
801	750	SALT LAKE	SLKCUTRP1MD
801	755	SALT LAKE	SLKDUTFJCM1
801	758	SALT LAKE	SLKDUTFJCM5
801	770	SALT LAKE	SLKCUT01DS0
801	780	SALT LAKE	SLKCUT01DS0
801	783	SALT LAKE	SLKDUTYIDS0
801	790	MIDVALE	SLKCUTMADS2
801	792	SALT LAKE	SLKDUTFJCM1
801	799	SALT LAKE	SLKCUTMADS1
801	808	SALT LAKE	SLKDUTFJCM1
801	809	SALT LAKE	SLKDUTFJCM1
801	815	SALT LAKE	SLKDUTFJCM1
801	816	MIDVALE	DRPRUTMADS0
801	817	SALT LAKE	WVCYUTBXDS0
801	822	SALT LAKE	SLKDUTITDS0
801	823	MIDVALE	SLKDUTITDS0
801	824	MURRAY	SLKDUTITDS0
801	828	SALT LAKE	SLKCUTMADSU
801	830	SALT LAKE	SLKCUTRP1MD
801	832	SALT LAKE	SLKUTSODS0
801	835	SALT LAKE	SLKDUTGNM1
801	838	MIDVALE	SLKCUTXDDS0
801	840	KEARNS	KRNSUTMADS1
801	842	SALT LAKE	SLKDUTHTDS0
801	843	SALT LAKE	SLKDUTHTDS0
801	849	KEARNS	WVCYUTBXDS0

801	856	SALT LAKE	SLKDUTFJCM1
801	858	MIDVALE	SLKCUTXDDS0
801	859	SALT LAKE	SLKDUTFJCM1
801	860	SALT LAKE	SLKDUTFJCM1
801	864	SALT LAKE	SLKDUTFJCM5
801	865	SALT LAKE	SLKDUTGNM1
801	867	SALT LAKE	SLKDUTFJCM1
801	870	SALT LAKE	SLKCUTWPCM1
801	879	SALT LAKE	SLKDUTGNM1
801	880	SALT LAKE	SLKDUTHTDS0
801	883	SALT LAKE	SLKCUTEADS0
801	884	SALT LAKE	SLKCUTEADS0
801	886	SALT LAKE	SLKCUTWEDS0
801	886	SALT LAKE	SLKCUTWERS0
801	886	SALT LAKE	SLKCUTWEDS0
801	887	SALT LAKE	SLKCUTWEDS0
801	891	SALT LAKE	SLKCUTWPCM1
801	892	MURRAY	SLKDUTHTDS0
801	897	SALT LAKE	SLKDUTFJCM1
801	898	SALT LAKE	SLKDUTFJCM1
801	902	KEARNS	KRNSUTMADS0
801	904	MURRAY	WVCYUTBXDS0
801	905	MURRAY	WVCYUTBXDS0
801	906	SALT LAKE	WVCYUTBXDS0
801	907	SALT LAKE	WVCYUTBXDS0
801	908	SALT LAKE	SLKCUTWEDS0
801	909	SALT LAKE	WVCYUTCLIKD
801	910	SALT LAKE	SLKCUTWPCM1
801	912	KEARNS	SLKCUTXDDS0
801	913	SALT LAKE	SLKCUTAON02
801	914	MURRAY	MRRYUTADCM1
801	915	SALT LAKE	SLKDUTFJCM1
801	916	SALT LAKE	SLKDUTFJCM1
801	918	SALT LAKE	SLKDUTGNM1
801	919	SALT LAKE	WVCYUTECHAA
801	924	SALT LAKE	SLKCUTXDDS0
801	929	SALT LAKE	WVCYUTECHAA
801	933	SALT LAKE	SLKCUTMADS1
801	937	HOLLADAY	SLKDUTHTDS0
801	938	MIDVALE	SLKDUTHTDS0
801	942	HOLLADAY	CTWDUTMADS0
801	943	HOLLADAY	CTWDUTMADS0
801	944	HOLLADAY	CTWDUTMADS0
801	945	KEARNS	SLKCUTXDDS0
801	947	HOLLADAY	CTWDUTMADS0
801	949	SALT LAKE	SLKDUTGNM1
801	952	SALT LAKE	SLKCUTWEDS0
801	953	SALT LAKE	SLKDUTGNM1
801	954	SALT LAKE	SLKCUTWEDS0
801	955	KEARNS	KRNSUTMADS1
801	956	SALT LAKE	SLKCUTWEDS0
801	957	KEARNS	KRNSUTMADS1
801	961	SALT LAKE	SLKCUTMADS1
801	962	KEARNS	KRNSUTMADS0
801	963	KEARNS	KRNSUTMADS1
801	964	KEARNS	KRNSUTMADS1
801	965	KEARNS	KRNSUTMADS1
801	966	KEARNS	KRNSUTMADS1
801	967	KEARNS	KRNSUTMADS1

**NXXs Remaining in the 801 NPA**

801	968	KEARNS	KRNSUTMADS1
801	969	KEARNS	KRNSUTMADS1
801	971	SALT LAKE	SLKCUTAON02
801	972	SALT LAKE	SLKCUTWEDS0
801	973	SALT LAKE	SLKCUTWEDS0
801	974	SALT LAKE	SLKCUTWEDS0
801	975	SALT LAKE	SLKCUTWEDS0
801	977	SALT LAKE	SLKCUTWEDS0
801	978	SALT LAKE	SLKCUTWEDS0
801	979	SALT LAKE	SLKDUTFJCM1
801	981	MAGNA	WVCYUTBXDS0
801	982	KEARNS	KRNSUTMADS1
801	983	SALT LAKE	SLKDUTHTDS0
801	984	MIDVALE	SLKDUTHTDS0
801	986	SALT LAKE	SLKDUTEWCM1
801	987	MAGNA	SLKDUTHTDS0
801	988	KEARNS	SLKDUTHTDS0
801	989	ALTA	SLKDUTHTDS0
801	990	SALT LAKE	SLKCUTXDDS0
801	993	HOLLADAY	SLKDUTHTDS0
801	994	SALT LAKE	SLKDUTHTDS0
801	995	MURRAY	MRRYUTMADS0
801	996	KEARNS	WVCYUTBXDS0
801	998	HOLLADAY	WVCYUTBXDS0
801	999	MIDVALE	WVCYUTBXDS0

385 NXXs Sorted by NXX

NPA	NXX	RC ABBRE	SWITCH
385	203	BOUNTIFUL	SLKDUTHTDS0
385	210	PROVO	SLKDUTHTDS0
385	216	AMERCNFORK	WVCYUTBXDS0
385	217	CLEARFIELD	WVCYUTBXDS0
385	218	FARMINGTON	WVCYUTBXDS0
385	221	PROVO	OREMUTMADS0
385	222	PROVO	OREMUTMADS0
385	223	PROVO	OREMUTMADS0
385	224	PROVO	OREMUTMADS0
385	225	PROVO	OREMUTMADS0
385	226	PROVO	OREMUTMADS0
385	227	PROVO	OREMUTMADS0
385	228	PROVO	OREMUTMADS0
385	229	PROVO	OREMUTMADS0
385	234	PROVO	OREMUTMADS0
385	235	PROVO	OREMUTMADS0
385	292	BOUNTIFUL	BNTFUTMADS0
385	294	BOUNTIFUL	BNTFUTMADS0
385	295	BOUNTIFUL	BNTFUTMADS0
385	296	BOUNTIFUL	BNTFUTMADS0
385	298	BOUNTIFUL	BNTFUTMADS0
385	299	BOUNTIFUL	BNTFUTMADS0
385	306	AMERCNFORK	SLKDUTHTDS0
385	308	GOSHEN	WVCYUTBXDS0
385	309	KAYSVILLE	SLKDUTGNM1
385	310	PROVO	PROVUT12CM1
385	315	KAYSVILLE	WVCYUTBXDS0
385	317	OGDEN	SLKDUTHTDS0
385	318	PROVO	SLKDUTGNM1
385	319	PROVO	PROVUT12CM1
385	330	OGDEN	MRRYUTFL1MD
385	331	LEHI	WVCYUTBXDS0
385	332	OGDEN	OGDNUTMADS0
385	334	OGDEN	OGDNUTMADS0
385	335	BOUNTIFUL	SLKDUTHTDS0
385	336	KAYSVILLE	SLKDUTHTDS0
385	337	OGDEN	SLKDUTHTDS0
385	340	OGDEN	SLKCUTXDDS0
385	342	PROVO	PROVUTMADS0
385	343	PROVO	PROVUTMADS0
385	344	PROVO	PROVUTMADS0
385	345	PROVO	SLKCUTXDDS0
385	351	PROVO	PROVUTMADS0
385	354	PROVO	PROVUTMADS0
385	356	PROVO	PROVUTMADS0
385	357	PROVO	PROVUTMADS0
385	358	PROVO	SLKDUTGNM1
385	360	PROVO	PROVUT07CM1
385	361	PROVO	PROVUT12CM1
385	362	PROVO	PROVUT12CM1
385	367	PROVO	PROVUT07CM1
385	368	PROVO	PROVUT12CM1
385	369	PROVO	PROVUT12CM1
385	370	PROVO	PROVUTMADS0
385	371	PROVO	PROVUTMADS0
385	372	PROVO	PROVUT07CM1
385	373	PROVO	PROVUTMADS0
385	374	PROVO	PROVUTMADS0

385	375	PROVO	PROVUTMADS0
385	376	PROVO	PROVUT12CM1
385	377	PROVO	PROVUTMADS0
385	378	PROVO	PROVUTMADS0
385	379	PROVO	PROVUTMADS0
385	380	PROVO	PROVUT07CM1
385	383	BOUNTIFUL	SLKCUTXDDS0
385	388	OGDEN	OGDNUTAACM1
385	389	OGDEN	OGDNUTAACM1
385	390	KAYSVILLE	SLKDUTGNM1
385	391	OGDEN	OGDNUTAACM1
385	392	OGDEN	OGDNUTMADS0
385	393	OGDEN	OGDNUTMADS0
385	394	OGDEN	OGDNUTMADS0
385	395	OGDEN	OGDNUTMADS0
385	396	OGDEN	WVCYUTECHAA
385	397	BOUNTIFUL	BNTFUTMADS0
385	398	OGDEN	OGDNUTMADS0
385	399	OGDEN	OGDNUTMADS0
385	400	PROVO	SLKCUTRP1MD
385	402	FARMINGTON	FRTNUTMADS0
385	404	PROVO	PROVUTFG1MD
385	405	PAYSON	WVCYUTBXDS0
385	406	PLEASATGRV	WVCYUTBXDS0
385	407	LEHI	SLKDUTHTDS0
385	409	OGDEN	SLKCUTXDDS0
385	416	CLEARFIELD	SLKDUTHTDS0
385	418	PROVO	PROVUTMADS0
385	419	OGDEN	OGDNUT14DS0
385	420	PROVO	PROVUTFG1MD
385	421	PROVO	PROVUTCDDS0
385	423	SPANIHFORK	SALMUTMARS1
385	425	PROVO	OREMUTMADS0
385	426	PROVO	OREMUTMADS0
385	429	PROVO	PROVUTMADS0
385	431	PROVO	OREMUTMADS0
385	432	MORGAN	SLKDUTHTDS0
385	434	PROVO	OREMUTMADS0
385	436	OGDEN	SLKCUT30DS0
385	437	PROVO	SLKCUTXDDS0
385	438	PROVO	SLKCUT30DS0
385	443	PLEASATGRV	SLKDUTHTDS0
385	444	KAYSVILLE	KYVLUTMADS0
385	447	FARMINGTON	FRTNUTMADS0
385	451	FARMINGTON	FRTNUTMADS0
385	456	CLEARFIELD	SLKDUTHTDS0
385	457	OGDEN	SLKCUTXDDS0
385	459	OGDEN	SLKCUTXDDS0
385	465	PAYSON	PYSNUTMARS1
385	469	OGDEN	SLKCUTXDDS0
385	470	PROVO	PROVUTMADS0
385	471	PROVO	SLKDUTGNM1
385	472	PROVO	SLKDUTGNM1
385	473	PROVO	SLKDUTGNM1
385	475	OGDEN	OGDNUTSODS0
385	476	OGDEN	OGDNUTSODS0
385	477	KAYSVILLE	KYVLUTMADS0
385	479	OGDEN	OGDNUTSODS0
385	489	SPRINGVL	SPVLUTMADS0



385 NXXs Sorted by NXX

385	491	SPRINGVL	SPVLUTMADS0
385	492	AMERCNFORK	AMFKUTMADS0
385	494	PROVO	SLKDUTHTDS0
385	496	PROVO	OREMUTMADS0
385	497	KAYSVILLE	KYVLUTMADS0
385	498	KAYSVILLE	KYVLUTMADS0
385	499	KAYSVILLE	KRNSUTAFCM1
385	503	PROVO	PROVUTCDDS0
385	504	SPANIHFORK	WVCYUTBXDS0
385	505	SPNSFKCNYN	WVCYUTBXDS0
385	506	PROVO	PROVUTSN1MD
385	510	KAYSVILLE	LYTNUTAHCMI
385	512	PROVO	PROVUTCDDS0
385	513	PROVO	PROVUTCDDS0
385	515	SPRINGVL	WVCYUTBXDS0
385	516	MORGAN	WVCYUTBXDS0
385	525	CLEARFIELD	CLFDUTMADS0
385	528	OGDEN	SLKDUTHTDS0
385	540	KAYSVILLE	LYTNUTAHCMI
385	543	KAYSVILLE	KYVLUTMADS0
385	544	KAYSVILLE	KYVLUTMADS0
385	546	KAYSVILLE	KYVLUTMADS0
385	547	KAYSVILLE	KYVLUTMADS0
385	549	KAYSVILLE	KYVLUTMADS0
385	551	PROVO	PROVUTMADS0
385	552	KAYSVILLE	KYVLUTMADS0
385	564	OGDEN	SLKCUTRP1MD
385	586	CLEARFIELD	CLFDUTMADS0
385	589	KAYSVILLE	KRNSUTAFCM1
385	591	KAYSVILLE	KYVLUTMADS0
385	592	PROVO	PROVUT07CM1
385	593	KAYSVILLE	KYVLUTMADS0
385	602	PROVO	SLKDUTGNCMI
385	605	OGDEN	WVCYUTBXDS0
385	607	PROVO	WVCYUTBXDS0
385	609	PROVO	PROVUTCDDS0
385	610	OGDEN	SLKDUTHTDS0
385	612	OGDEN	OGDNUTMADS0
385	614	KAYSVILLE	LYTNUTMADS0
385	615	AMERCNFORK	SLKDUTHTDS0
385	616	PROVO	PROVUTCDDS0
385	618	PROVO	PROVUTCDDS0
385	620	OGDEN	OGDNUTMADS0
385	621	OGDEN	OGDNUTMADS0
385	622	OGDEN	OGDNUTMADS0
385	625	OGDEN	OGDNUTMADS0
385	626	OGDEN	OGDNUTMADS0
385	627	OGDEN	OGDNUTMADS0
385	629	OGDEN	OGDNUTMADS0
385	632	KAYSVILLE	KYVLUTMADS0
385	636	PROVO	SLKCUTRP1MD
385	638	BOUNTIFUL	SLKDUTITDS0
385	640	OGDEN	SLKCUTXDDS0
385	643	OGDEN	SLKDUTFJCM5
385	644	OGDEN	SLKDUTFJCM5
385	645	OGDEN	SLKDUTFJCM5
385	650	OGDEN	SLKCUTXDDS0
385	659	OGDEN	SLKCUTXDDS0
385	663	OGDEN	SLKDUTITDS0

385	664	PROVO	SLKDUTITDS0
385	665	CLEARFIELD	SLKDUTITDS0
385	667	GOSHEN	GSHNUTXCRS1
385	668	OGDEN	SLKDUTFJCM5
385	669	BOUNTIFUL	BNTFUTMADS0
385	670	OGDEN	OGDNUTMADS0
385	681	OGDEN	SLKCUTXDDS0
385	689	OGDEN	SLKCUTMADS2
385	690	OGDEN	SLKCUTRP1MD
385	693	BOUNTIFUL	BNTFUTMADS0
385	697	OGDEN	SLKCUTXDDS0
385	698	KAYSVILLE	KRNSUTAFCM1
385	701	OGDEN	OGDNUT14DS0
385	704	OGDEN	OGDNUT14DS0
385	705	PROVO	SLKCUTXDDS0
385	707	OGDEN	OGDNUT14DS0
385	710	OGDEN	OGDNUTEOCM1
385	714	PROVO	OREMUTMADS0
385	717	PROVO	SLKCUT24DS1
385	720	OGDEN	SLKCUTXDDS0
385	721	KAYSVILLE	LYTNUTAHCMI
385	722	PROVO	OREMUTMADS0
385	724	PROVO	OREMUTMADS0
385	725	KAYSVILLE	LYTNUTAHCMI
385	726	KAYSVILLE	LYTNUTAHCMI
385	728	CLEARFIELD	CLFDUTMADS0
385	729	OGDEN	SLKCUTXDDS0
385	730	OGDEN	SLKCUTXDDS0
385	731	OGDEN	OGDNUTWERS1
385	732	OGDEN	OGDNUTWERS1
385	734	PLEASATGRV	SLKDUTHTDS0
385	735	PROVO	SLKDUTHTDS0
385	737	OGDEN	OGDNUTNODS0
385	740	OGDEN	SLKCUTXDDS0
385	745	OGDEN	HNVIUTMARS1
385	749	OGDEN	SLKCUTXDDS0
385	751	OGDEN	SLKCUTXDDS0
385	754	PAYSON	SNTQUTMARS1
385	756	AMERCNFORK	AMFKUTMADS0
385	757	OGDEN	OGDNUT14DS0
385	760	OGDEN	SLKCUTXDDS0
385	761	OGDEN	SLKCUTXDDS0
385	762	PROVO	OREMUTMADS0
385	763	AMERCNFORK	AMFKUTMADS0
385	764	PROVO	OREMUTMADS0
385	765	PROVO	OREMUTMADS0
385	766	LEHI	LEHIUTMADS0
385	767	LEHI	LEHIUTMADS0
385	768	LEHI	LEHIUTMADS0
385	769	OGDEN	OGDNUT14DS0
385	771	KAYSVILLE	LYTNUTMADS0
385	772	AMERCNFORK	AMFKUTMADS0
385	773	CLEARFIELD	CLFDUTMADS0
385	774	CLEARFIELD	CLFDUTMADS0
385	775	CLEARFIELD	CLFDUTMADS0
385	776	CLEARFIELD	CLFDUTMADS0
385	777	CLEARFIELD	CLFDUTMADS0
385	778	OGDEN	OGDNUTMADS0
385	779	CLEARFIELD	CLFDUTMADS0

385 NXXs Sorted by NXX

385	781	OGDEN	SLKCUTXDDS0
385	782	OGDEN	OGDNUTNODS0
385	784	CLEARFIELD	SLKDUTYIDS0
385	785	PLEASATGRV	PLGVUTMADS0
385	786	OGDEN	OGDNUTNODS0
385	787	PROVO	PROVUTSN1MD
385	788	PROVO	SLKDUTYIDS0
385	791	OGDEN	OGDNUTEOCM1
385	794	SPANIHFORK	SPFKUTMARS1
385	796	PLEASATGRV	PLGVUTMADS0
385	798	SPANIHFORK	SPFKUTMARS1
385	802	PROVO	OREMUTMADS0
385	804	SPANIHFORK	SLKDUTHTDS0
385	805	PROVO	SLKDUTHTDS0
385	806	SPRINGVL	SLKDUTHTDS0
385	807	KAYSVILLE	SLKDUTHTDS0
385	810	OGDEN	OGDNUT14DS0
385	812	PROVO	PROVUTMADS0
385	814	OGDEN	SLKDUTFJCM5
385	818	PROVO	PROVUTMADS0
385	820	CLEARFIELD	SLKCUTMADS2
385	821	MORGAN	MRGNUTQACM1
385	825	CLEARFIELD	CLFDUTMADS0
385	829	MORGAN	MRGNUTMARS1
385	841	PROVO	SLKDUTHTDS0
385	845	MORGAN	MRGNUTMARS1
385	847	AMERCNFORK	SLKDUTHTDS0
385	851	PROVO	PROVUTMA6MD
385	852	PROVO	SLKDUTHTDS0
385	853	SPRINGVL	SLKDUTHTDS0
385	861	PROVO	PROVUTMADS0
385	862	PROVO	OREMUTMADS0
385	868	PROVO	OREMUTMADS0
385	873	SPNSFKCNYN	FRVWUTXCDS0
385	876	MORGAN	MTGNUTMARS1
385	881	OGDEN	SLKCUTXDDS0
385	890	PROVO	WVCYUTECHAA
385	894	SPANIHFORK	SLKDUTHTDS0
385	901	OGDEN	SLKDUTHTDS0
385	917	OGDEN	SLKCUT24DS1
385	920	OGDEN	SLKDUTGNCM1
385	921	PROVO	SLKDUTGNCM1
385	922	PLEASATGRV	SLKDUTHTDS0
385	925	PAYSON	SLKDUTHTDS0
385	926	CLEARFIELD	SLKDUTHTDS0
385	927	KAYSVILLE	SLKDUTHTDS0
385	932	PROVO	SLKDUTHTDS0
385	934	FARMINGTON	SLKDUTHTDS0
385	936	BOUNTIFUL	NSLKUTMARS2
385	939	FARMINGTON	SLKDUTHTDS0
385	940	OGDEN	MRRYUTFL1MD
385	941	OGDEN	SLKDUTFJCM5
385	951	BOUNTIFUL	SLKDUTHTDS0
385	985	CLEARFIELD	ROY UTMARS3
385	991	KAYSVILLE	SLKCUTXDDS0
385	992	BOUNTIFUL	WVCYUTBXDS0

385 NXXs Sorted by Rate Center

NPA	NXX	RC ABBRE	SWITCH
385	216	AMERCNFORK	WVCYUTBXDS0
385	306	AMERCNFORK	SLKDUTHTDS0
385	492	AMERCNFORK	AMFKUTMADS0
385	615	AMERCNFORK	SLKDUTHTDS0
385	756	AMERCNFORK	AMFKUTMADS0
385	763	AMERCNFORK	AMFKUTMADS0
385	772	AMERCNFORK	AMFKUTMADS0
385	847	AMERCNFORK	SLKDUTHTDS0
385	203	BOUNTIFUL	SLKDUTHTDS0
385	292	BOUNTIFUL	BNTFUTMADS0
385	294	BOUNTIFUL	BNTFUTMADS0
385	295	BOUNTIFUL	BNTFUTMADS0
385	296	BOUNTIFUL	BNTFUTMADS0
385	298	BOUNTIFUL	BNTFUTMADS0
385	299	BOUNTIFUL	BNTFUTMADS0
385	335	BOUNTIFUL	SLKDUTHTDS0
385	383	BOUNTIFUL	SLKCUTXDDS0
385	397	BOUNTIFUL	BNTFUTMADS0
385	638	BOUNTIFUL	SLKDUTHTDS0
385	669	BOUNTIFUL	BNTFUTMADS0
385	693	BOUNTIFUL	BNTFUTMADS0
385	936	BOUNTIFUL	NSLKUTMARS2
385	951	BOUNTIFUL	SLKDUTHTDS0
385	992	BOUNTIFUL	WVCYUTBXDS0
385	217	CLEARFIELD	WVCYUTBXDS0
385	416	CLEARFIELD	SLKDUTHTDS0
385	456	CLEARFIELD	SLKDUTHTDS0
385	525	CLEARFIELD	CLFDUTMADS0
385	586	CLEARFIELD	CLFDUTMADS0
385	665	CLEARFIELD	SLKDUTHTDS0
385	728	CLEARFIELD	CLFDUTMADS0
385	773	CLEARFIELD	CLFDUTMADS0
385	774	CLEARFIELD	CLFDUTMADS0
385	775	CLEARFIELD	CLFDUTMADS0
385	776	CLEARFIELD	CLFDUTMADS0
385	777	CLEARFIELD	CLFDUTMADS0
385	779	CLEARFIELD	CLFDUTMADS0
385	784	CLEARFIELD	SLKDUTYIDS0
385	820	CLEARFIELD	SLKCUTMADS2
385	825	CLEARFIELD	CLFDUTMADS0
385	926	CLEARFIELD	SLKDUTHTDS0
385	985	CLEARFIELD	ROY UTMARS3
385	218	FARMINGTON	WVCYUTBXDS0
385	402	FARMINGTON	FRTNUTMADS0
385	447	FARMINGTON	FRTNUTMADS0
385	451	FARMINGTON	FRTNUTMADS0
385	934	FARMINGTON	SLKDUTHTDS0
385	939	FARMINGTON	SLKDUTHTDS0
385	308	GOSHEN	WVCYUTBXDS0
385	667	GOSHEN	GSHNUTXCRS1
385	309	KAYSVILLE	SLKDUTGNMCM1
385	315	KAYSVILLE	WVCYUTBXDS0
385	336	KAYSVILLE	SLKDUTHTDS0
385	390	KAYSVILLE	SLKDUTGNMCM1
385	444	KAYSVILLE	KYVLUTMADS0
385	477	KAYSVILLE	KYVLUTMADS0
385	497	KAYSVILLE	KYVLUTMADS0
385	498	KAYSVILLE	KYVLUTMADS0

385	499	KAYSVILLE	KRNSUTAFCM1
385	510	KAYSVILLE	LYTNUTAHCM1
385	540	KAYSVILLE	LYTNUTAHCM1
385	543	KAYSVILLE	KYVLUTMADS0
385	544	KAYSVILLE	KYVLUTMADS0
385	546	KAYSVILLE	KYVLUTMADS0
385	547	KAYSVILLE	KYVLUTMADS0
385	549	KAYSVILLE	KYVLUTMADS0
385	552	KAYSVILLE	KYVLUTMADS0
385	589	KAYSVILLE	KRNSUTAFCM1
385	591	KAYSVILLE	KYVLUTMADS0
385	593	KAYSVILLE	KYVLUTMADS0
385	614	KAYSVILLE	LYTNUTMADS0
385	632	KAYSVILLE	KYVLUTMADS0
385	698	KAYSVILLE	KRNSUTAFCM1
385	721	KAYSVILLE	LYTNUTAHCM1
385	725	KAYSVILLE	LYTNUTAHCM1
385	726	KAYSVILLE	LYTNUTAHCM1
385	771	KAYSVILLE	LYTNUTMADS0
385	807	KAYSVILLE	SLKDUTHTDS0
385	927	KAYSVILLE	SLKDUTHTDS0
385	991	KAYSVILLE	SLKCUTXDDS0
385	331	LEHI	WVCYUTBXDS0
385	407	LEHI	SLKDUTHTDS0
385	766	LEHI	LEHIUTMADS0
385	767	LEHI	LEHIUTMADS0
385	768	LEHI	LEHIUTMADS0
385	432	MORGAN	SLKDUTHTDS0
385	516	MORGAN	WVCYUTBXDS0
385	821	MORGAN	MRGNUTQACM1
385	829	MORGAN	MRGNUTMARS1
385	845	MORGAN	MRGNUTMARS1
385	876	MORGAN	MTGNUTMARS1
385	317	OGDEN	SLKDUTHTDS0
385	330	OGDEN	MRRYUTFL1MD
385	332	OGDEN	OGDNUTMADS0
385	334	OGDEN	OGDNUTMADS0
385	337	OGDEN	SLKDUTHTDS0
385	340	OGDEN	SLKCUTXDDS0
385	388	OGDEN	OGDNUTAACM1
385	389	OGDEN	OGDNUTAACM1
385	391	OGDEN	OGDNUTAACM1
385	392	OGDEN	OGDNUTMADS0
385	393	OGDEN	OGDNUTMADS0
385	394	OGDEN	OGDNUTMADS0
385	395	OGDEN	OGDNUTMADS0
385	396	OGDEN	WVCYUTECHAA
385	398	OGDEN	OGDNUTMADS0
385	399	OGDEN	OGDNUTMADS0
385	409	OGDEN	SLKCUTXDDS0
385	419	OGDEN	OGDNUT14DS0
385	436	OGDEN	SLKCUT30DS0
385	457	OGDEN	SLKCUTXDDS0
385	459	OGDEN	SLKCUTXDDS0
385	469	OGDEN	SLKCUTXDDS0
385	475	OGDEN	OGDNUTSODS0
385	476	OGDEN	OGDNUTSODS0
385	479	OGDEN	OGDNUTSODS0
385	528	OGDEN	SLKDUTHTDS0

385 NXXs Sorted by Rate Center

385	564	OGDEN	SLKCUTRP1MD
385	605	OGDEN	WVCYUTBXDS0
385	610	OGDEN	SLKDUTHTDS0
385	612	OGDEN	OGDNUTMADS0
385	620	OGDEN	OGDNUTMADS0
385	621	OGDEN	OGDNUTMADS0
385	622	OGDEN	OGDNUTMADS0
385	625	OGDEN	OGDNUTMADS0
385	626	OGDEN	OGDNUTMADS0
385	627	OGDEN	OGDNUTMADS0
385	629	OGDEN	OGDNUTMADS0
385	640	OGDEN	SLKCUTXDDS0
385	643	OGDEN	SLKDUTFJCM5
385	644	OGDEN	SLKDUTFJCM5
385	645	OGDEN	SLKDUTFJCM5
385	650	OGDEN	SLKCUTXDDS0
385	659	OGDEN	SLKCUTXDDS0
385	663	OGDEN	SLKDUTITDS0
385	668	OGDEN	SLKDUTFJCM5
385	670	OGDEN	OGDNUTMADS0
385	681	OGDEN	SLKCUTXDDS0
385	689	OGDEN	SLKCUTMADS2
385	690	OGDEN	SLKCUTRP1MD
385	697	OGDEN	SLKCUTXDDS0
385	701	OGDEN	OGDNUT14DS0
385	704	OGDEN	OGDNUT14DS0
385	707	OGDEN	OGDNUT14DS0
385	710	OGDEN	OGDNUTEOCM1
385	720	OGDEN	SLKCUTXDDS0
385	729	OGDEN	SLKCUTXDDS0
385	730	OGDEN	SLKCUTXDDS0
385	731	OGDEN	OGDNUTWERS1
385	732	OGDEN	OGDNUTWERS1
385	737	OGDEN	OGDNUTNODS0
385	740	OGDEN	SLKCUTXDDS0
385	745	OGDEN	HNVIUTMARS1
385	749	OGDEN	SLKCUTXDDS0
385	751	OGDEN	SLKCUTXDDS0
385	757	OGDEN	OGDNUT14DS0
385	760	OGDEN	SLKCUTXDDS0
385	761	OGDEN	SLKCUTXDDS0
385	769	OGDEN	OGDNUT14DS0
385	778	OGDEN	OGDNUTMADS0
385	781	OGDEN	SLKCUTXDDS0
385	782	OGDEN	OGDNUTNODS0
385	786	OGDEN	OGDNUTNODS0
385	791	OGDEN	OGDNUTEOCM1
385	810	OGDEN	OGDNUT14DS0
385	814	OGDEN	SLKDUTFJCM5
385	881	OGDEN	SLKCUTXDDS0
385	901	OGDEN	SLKDUTHTDS0
385	917	OGDEN	SLKCUT24DS1
385	920	OGDEN	SLKDUTGNMCM1
385	940	OGDEN	MRRYUTFL1MD
385	941	OGDEN	SLKDUTFJCM5
385	405	PAYSON	WVCYUTBXDS0
385	465	PAYSON	PYSNUTMARS1
385	754	PAYSON	SNTQUTMARS1
385	925	PAYSON	SLKDUTHTDS0

385	406	PLEASATGRV	WVCYUTBXDS0
385	443	PLEASATGRV	SLKDUTHTDS0
385	734	PLEASATGRV	SLKDUTHTDS0
385	785	PLEASATGRV	PLGVUTMADS0
385	796	PLEASATGRV	PLGVUTMADS0
385	922	PLEASATGRV	SLKDUTHTDS0
385	210	PROVO	SLKDUTHTDS0
385	221	PROVO	OREMUTMADS0
385	222	PROVO	OREMUTMADS0
385	223	PROVO	OREMUTMADS0
385	224	PROVO	OREMUTMADS0
385	225	PROVO	OREMUTMADS0
385	226	PROVO	OREMUTMADS0
385	227	PROVO	OREMUTMADS0
385	228	PROVO	OREMUTMADS0
385	229	PROVO	OREMUTMADS0
385	234	PROVO	OREMUTMADS0
385	235	PROVO	OREMUTMADS0
385	310	PROVO	PROVUT12CM1
385	318	PROVO	SLKDUTGNMCM1
385	319	PROVO	PROVUT12CM1
385	342	PROVO	PROVUTMADS0
385	343	PROVO	PROVUTMADS0
385	344	PROVO	PROVUTMADS0
385	345	PROVO	SLKCUTXDDS0
385	351	PROVO	PROVUTMADS0
385	354	PROVO	PROVUTMADS0
385	356	PROVO	PROVUTMADS0
385	357	PROVO	PROVUTMADS0
385	358	PROVO	SLKDUTGNMCM1
385	360	PROVO	PROVUT07CM1
385	361	PROVO	PROVUT12CM1
385	362	PROVO	PROVUT12CM1
385	367	PROVO	PROVUT07CM1
385	368	PROVO	PROVUT12CM1
385	369	PROVO	PROVUT12CM1
385	370	PROVO	PROVUTMADS0
385	371	PROVO	PROVUTMADS0
385	372	PROVO	PROVUT07CM1
385	373	PROVO	PROVUTMADS0
385	374	PROVO	PROVUTMADS0
385	375	PROVO	PROVUTMADS0
385	376	PROVO	PROVUT12CM1
385	377	PROVO	PROVUTMADS0
385	378	PROVO	PROVUTMADS0
385	379	PROVO	PROVUTMADS0
385	380	PROVO	PROVUT07CM1
385	400	PROVO	SLKCUTRP1MD
385	404	PROVO	PROVUTFG1MD
385	418	PROVO	PROVUTMADS0
385	420	PROVO	PROVUTFG1MD
385	421	PROVO	PROVUTCDDS0
385	425	PROVO	OREMUTMADS0
385	426	PROVO	OREMUTMADS0
385	429	PROVO	PROVUTMADS0
385	431	PROVO	OREMUTMADS0
385	434	PROVO	OREMUTMADS0
385	437	PROVO	SLKCUTXDDS0
385	438	PROVO	SLKCUT30DS0

**385 NXXs Sorted by Rate Center**

385	470	PROVO	PROVUTMADS0
385	471	PROVO	SLKDUTGNM1
385	472	PROVO	SLKDUTGNM1
385	473	PROVO	SLKDUTGNM1
385	494	PROVO	SLKDUTHTDS0
385	496	PROVO	OREMUTMADS0
385	503	PROVO	PROVUTCDDS0
385	506	PROVO	PROVUTSN1MD
385	512	PROVO	PROVUTCDDS0
385	513	PROVO	PROVUTCDDS0
385	551	PROVO	PROVUTMADS0
385	592	PROVO	PROVUT07CM1
385	602	PROVO	SLKDUTGNM1
385	607	PROVO	WVCYUTBXDS0
385	609	PROVO	PROVUTCDDS0
385	616	PROVO	PROVUTCDDS0
385	618	PROVO	PROVUTCDDS0
385	636	PROVO	SLKCUTRP1MD
385	664	PROVO	SLKDUTITDS0
385	705	PROVO	SLKCUTXDDS0
385	714	PROVO	OREMUTMADS0
385	717	PROVO	SLKCUT24DS1
385	722	PROVO	OREMUTMADS0
385	724	PROVO	OREMUTMADS0
385	735	PROVO	SLKDUTHTDS0
385	762	PROVO	OREMUTMADS0
385	764	PROVO	OREMUTMADS0
385	765	PROVO	OREMUTMADS0
385	787	PROVO	PROVUTSN1MD

385	788	PROVO	SLKDUTYIDS0
385	802	PROVO	OREMUTMADS0
385	805	PROVO	SLKDUTHTDS0
385	812	PROVO	PROVUTMADS0
385	818	PROVO	PROVUTMADS0
385	841	PROVO	SLKDUTHTDS0
385	851	PROVO	PROVUTMA6MD
385	852	PROVO	SLKDUTHTDS0
385	861	PROVO	PROVUTMADS0
385	862	PROVO	OREMUTMADS0
385	868	PROVO	OREMUTMADS0
385	890	PROVO	WVCYUTECHAA
385	921	PROVO	SLKDUTGNM1
385	932	PROVO	SLKDUTHTDS0
385	423	SPANIHFORK	SALMUTMARS1
385	504	SPANIHFORK	WVCYUTBXDS0
385	794	SPANIHFORK	SPFKUTMARS1
385	798	SPANIHFORK	SPFKUTMARS1
385	804	SPANIHFORK	SLKDUTHTDS0
385	894	SPANIHFORK	SLKDUTHTDS0
385	505	SPNSFKCNYN	WVCYUTBXDS0
385	873	SPNSFKCNYN	FRVWUTXCDS0
385	489	SPRINGVL	SPVLUTMADS0
385	491	SPRINGVL	SPVLUTMADS0
385	515	SPRINGVL	WVCYUTBXDS0
385	806	SPRINGVL	SLKDUTHTDS0
385	853	SPRINGVL	SLKDUTHTDS0