

Number: PL-260

Date: January 29, 2001

From: North American Numbering Plan Administration (NANPA)

Subject: DeBary Rate Center Moves from 407 NPA to 386 NPA (Florida)

---

On October 20, 2000, the Florida Public Service Commission ordered a two-way geographic split as the relief method for the 904 NPA. The 904 NPA serves Northeast Florida. The relief plan calls for the 904 NPA to be retained by all or most of Nassau, Duval, Baker, Bradford, Clay and St. Johns Counties while introducing a new NPA, 386, for the remainder of the current 904 NPA area. Refer to NANPA Planning Letter PL-252. In its order, the Florida Public Service Commission also ordered the DeBary Rate Center to be moved from the 407 NPA to the new 386 NPA. The attached map identifies the boundaries of the 904, 386 and 407 NPAs after this action.

Also attached is a listing of the current 407 NPA central office (NXX) codes in the DeBary Rate Center and their Common Language Location Identifiers (CLLI) that will move to the 386 NPA. This information is current as of January 26, 2001. Since NXX information may change over time, consult the Local Exchange Routing Guide (LERG) or the NXX Activity Guide (NNAG) for updated information. Information in the LERG and NNAG is available by license contract from Telcordia Technologies, Traffic Routing Administration (TRA), at 732-699-6700.

The permissive dialing period will begin at 2:00 AM Eastern Time on February 15, 2001. The permissive period will end at 2:00 AM Eastern Time on November 5, 2001. During the permissive period, either the 407 or 386 NPA code will be acceptable in a dialed number terminating in the DeBary, Florida Rate Center. After the permissive period, all calls dialed with the incorrect NPA code will be routed to intercept.

After the beginning of mandatory dialing on November 5, 2001, the dialing plan for the DeBary Rate Center, will be as follows:

- All local calls terminating in the home NPA will be dialed as 7-digits (NXX+XXXX)
- All local calls, including interstate, terminating in a foreign NPA will be dialed as 10-digits (NPA+NXX+XXXX) without a prefix.
- All toll calls will require the prefix "1" and ten digits (1+NPA+NXX+ XXXX).

- All operator-assisted calls, including credit card, collect, and third party calls, will require the prefix "0" and 10 digits (0+NPA+NXX+XXXX).

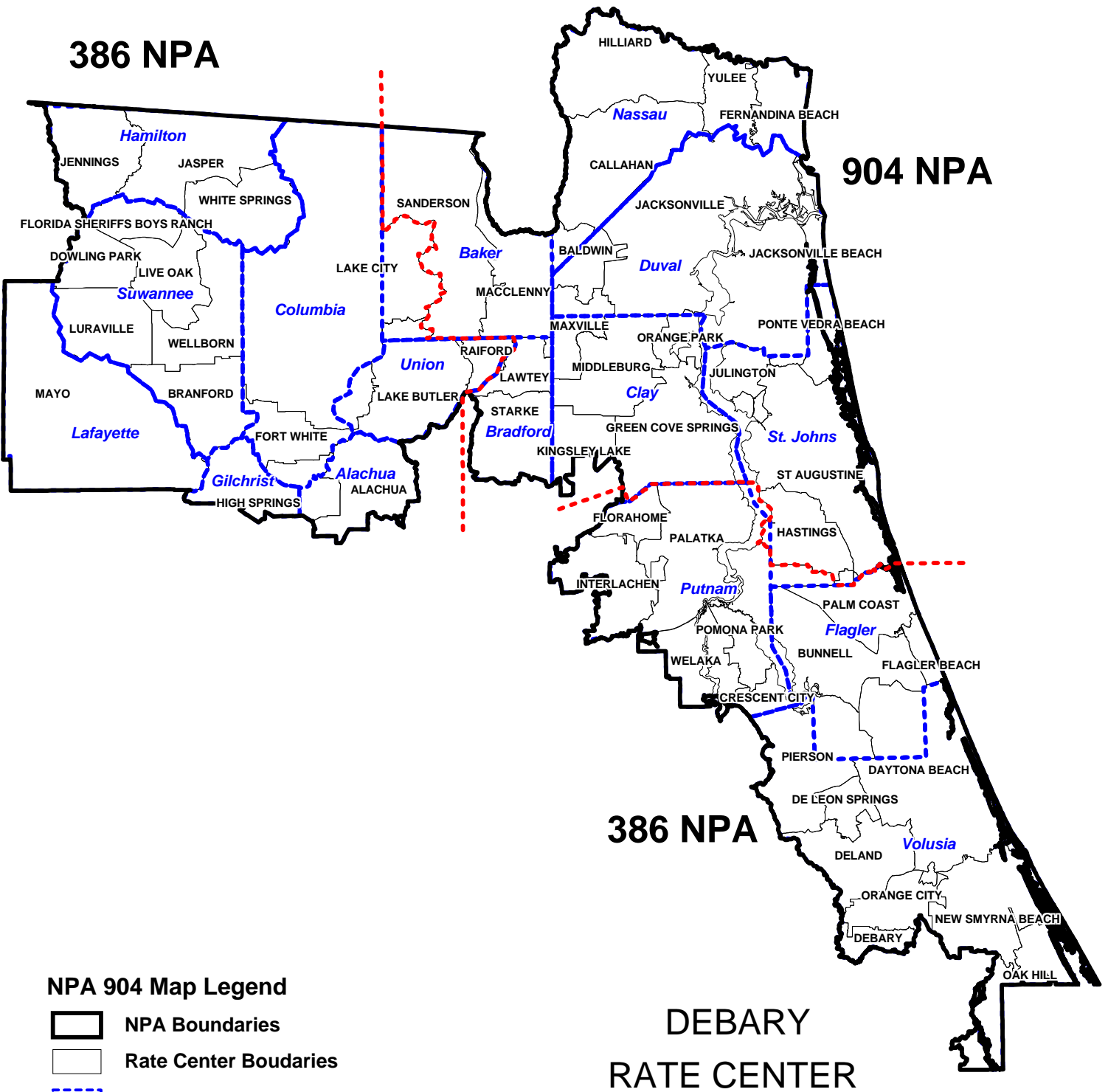
All international and domestic carriers should ensure that the change of the DeBary Rate Center from the 407 NPA to the 386 NPA has been activated throughout their networks prior to February 15, 2001.

After the end of permissive dialing, recorded announcements will direct callers who dialed the old area code to hang up and redial the call using the correct area code. These announcements will remain in effect until February 5, 2002, at a minimum.

General questions concerning this change should be directed to Thomas C. Foley, NPA Relief Planner – Eastern Region NANPA, at (407) 389-8929. Questions of a technical nature should be directed to the NPA coordinator of the appropriate service provider.



# 904 AREA CODE RELIEF



- NPA 904 Map Legend**
- NPA Boundaries
  - Rate Center Boundaries
  - County Boundaries
  - Split Line

DEBARY  
RATE CENTER

**DEBARY RATE CENTER  
NXXs MOVING TO 386 NPA  
AS OF 01/26/2001**

NXX	RATE CENTER	SWITCH
232	DEBARY	ORLDFLMAXCY
259	DEBARY	MTLDFLDQDS0
516	DEBARY	ORLDFLXHDS0
574	DEBARY	DBRYFLDLDS0
575	DEBARY	DBRYFLDLDS0
601	DEBARY	ORLEFLGVDS0
668	DEBARY	DBRYFLMARS1
731	DEBARY	ORLDFLLUDS0
742	DEBARY	ORLFFLEJDS0
753	DEBARY	DBRYFLMARS1
845	DEBARY	ORLDFLAC2MD
860	DEBARY	DBRYFLDLDS0
910	DEBARY	ORLDFLWRCOA0
968	DEBARY	MTLDFLAPDS0
969	DEBARY	ORLDFLMAXOX